



Receive email alerts based on your search criteria.

Create my alert



5384 Len Thompson Drive , Lacombe, Alberta - \$225,000



[Sean Gillis](#)

RE/MAX Grande Prairie

sean@seangillis.ca

P:

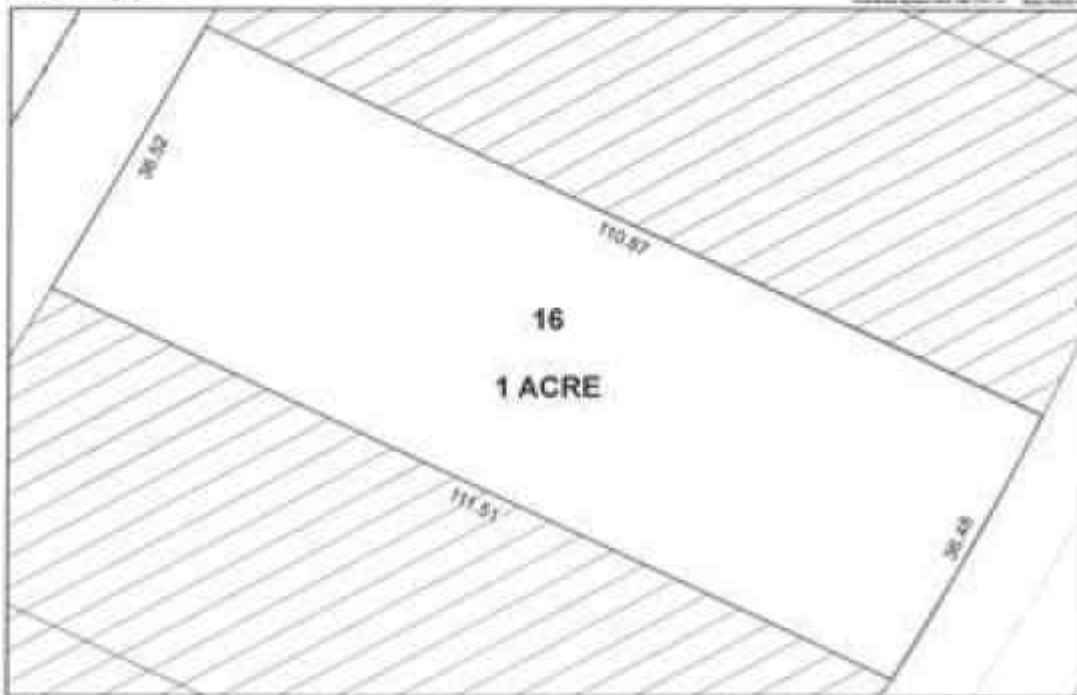
M: 780.897.3520

LEN THOMPSON PHASE II

5384 LEN THOMPSON DRIVE

LOT: 16

1420510;1:16



© CAVA M/SB #CA2131705

Main Photo



[Sean Gillis](#)

RE/MAX Grande Prairie

sean@seangillis.ca

P:

M: 780.897.3520

Property Description

Len Thompson Industrial Park. New 15 acre industrial park strategically located in the heart of Lacombe's industrial area and will soon be home to Lacombe's new Public Works shop and yard site. Features highway exposure, access and visibility. Conveniently located next to major regional highways. Lots are zoned light industrial which provides for a large variety of permitted and discretionary uses. Subdivision is paved, shovel ready with street lights and services to lot. Currently lots are 1 to 1.5 acres in size but if you need to amalgamate 1 or more lots to make your business plan work that is easy to do. Come take a look at the City of Lacombe and its newest industrial subdivision where your business needs will be met and thrive for years to come. Note the City is also willing to look at selling a separate 7 to 10 acre parcel.

REALTOR Referral



REALTOR®

Mobile: 780.897.3520

Email: sean@seangillis.ca

Website: <https://www.real-estate-homes.ca/>

Courtesy Of: Royal LePage Lifestyles Realty



[Sean Gillis](#)

RE/MAX Grande Prairie

sean@seangillis.ca

P:

M: 780.897.3520