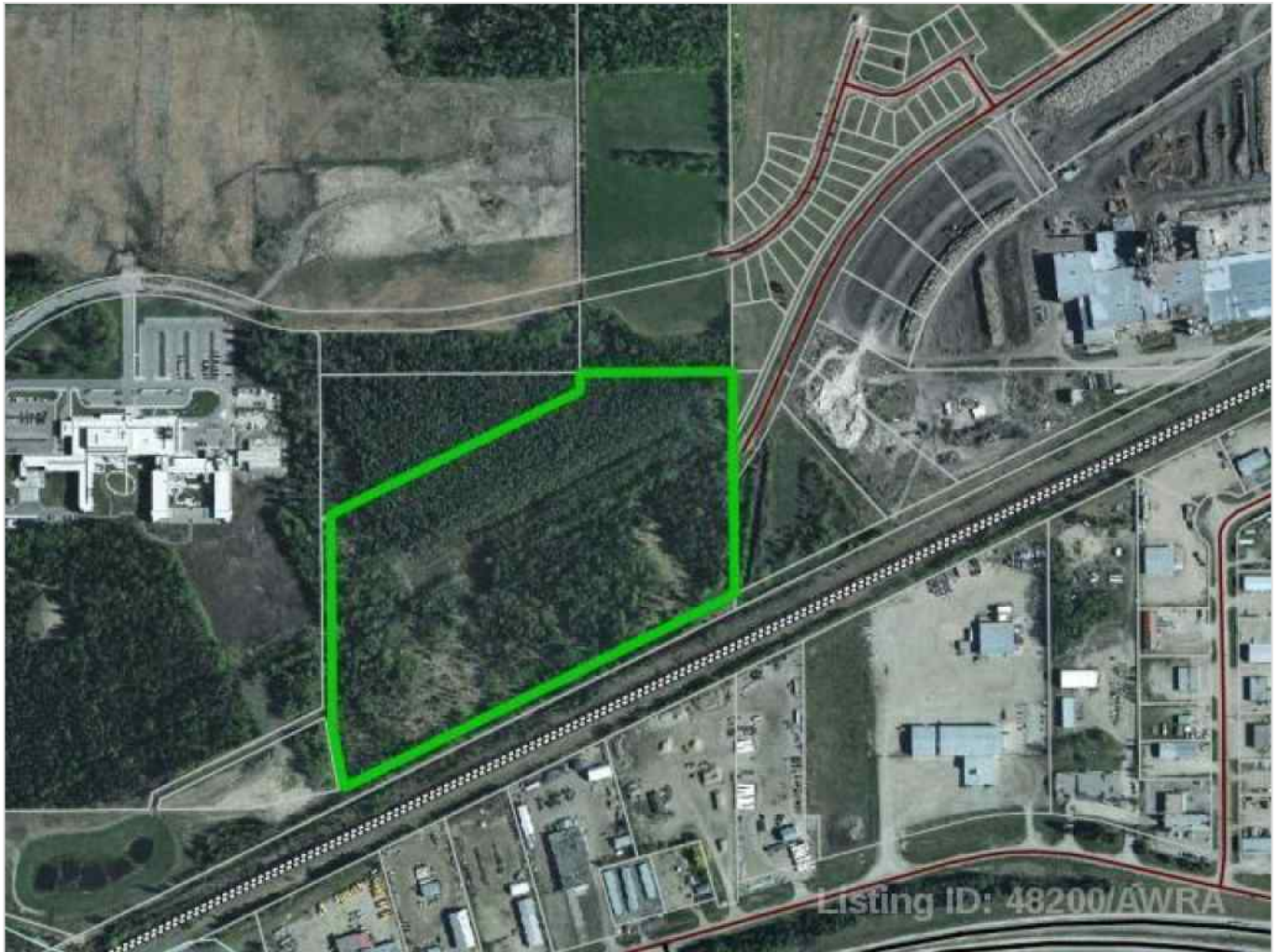




ASPEN DRIVE , Edson, Alberta - \$475,000



Main Photo

Property Description

Fantastic opportunity to own approximately 30 acres in town limits. Strategically located in the east end of Edson between the new Edson hospital and the Weyerhaeuser mill. The property is currently zoned Urban Reserve but with rezoning and Town approval the development possibilities are endless!

REALTOR Referral



P:



REALTOR®

Mobile: N/A

Email: N/A

Website: <https://www.real-estate-homes.ca/>

Courtesy Of: ROYAL LEPAGE EDSON REAL ESTATE



P: