

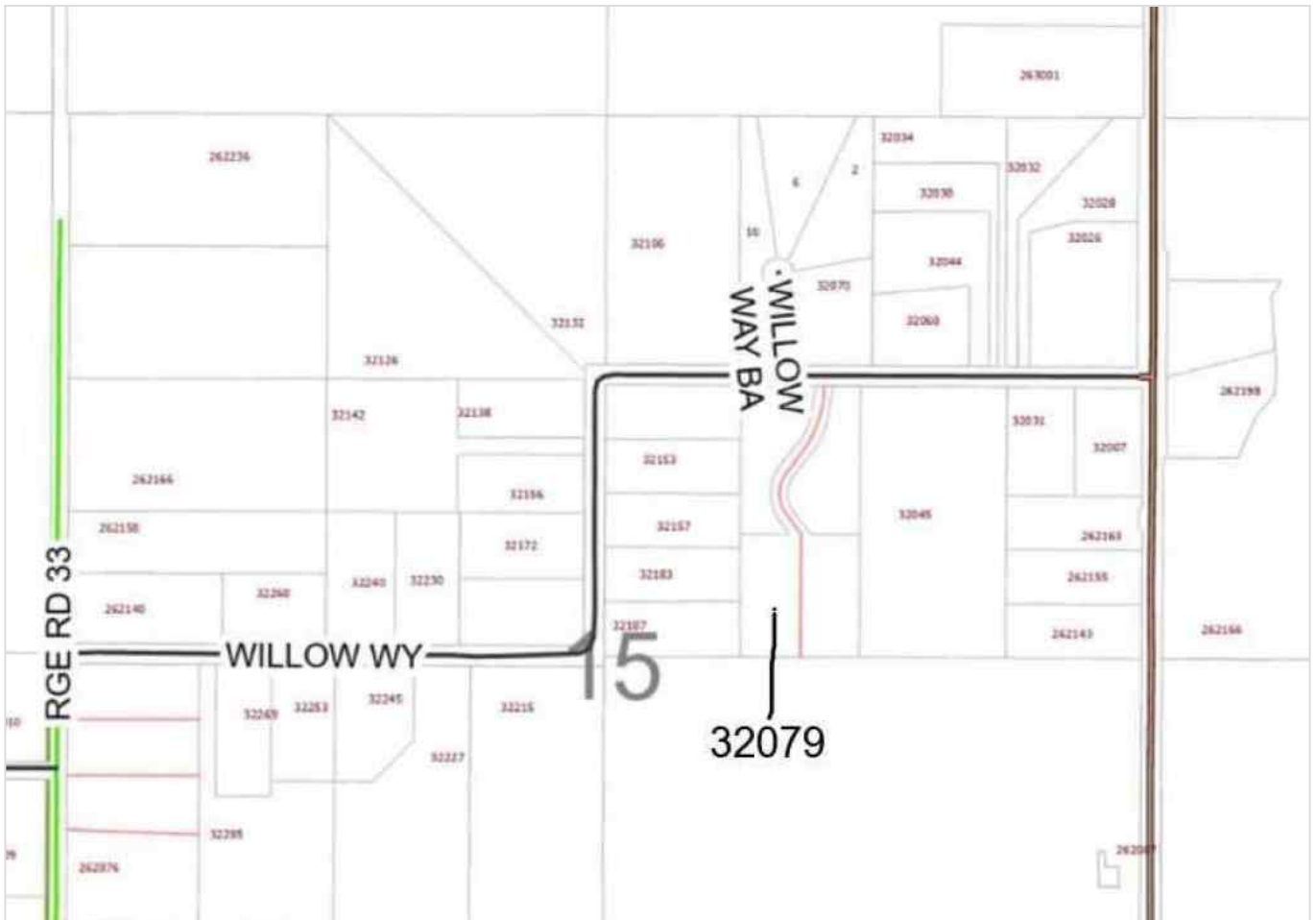


Receive email alerts based on your search criteria.

Create my alert



32079 Willow Way , Rural Rocky View County, Alberta - \$627,000



Main Photo

Property Description

This is a new 4.74 acre lot in the Bearspaw Area, just west of Lochend Road. on Willow Way. This property has nice grassland. The Rocky View Water Coop capacity unit (paid for by the developer). This land has a private paved approach, gently rolling land, and is south sloping. There is no restrictive covenant, no building commitment, nor Home Owners Association. The smallest lots in this area are 4 acres in size. The lot corners are triple flagged, and the lot lines have single flags on the stakes. The fence line on the west side is inside the lot by a couple of meters. This is one of four lots on this subdivision. Two are sold. This is a peaceful tranquil setting adding a blend of privacy and open space. Perfect for Country Residential living



[Big John Peterson](#)

RE/MAX Realty Professionals

info@bigjohn.ca

P: 403-244-5646

M: 403-244-5646

tucked away in a beautiful setting and away from the main road traffic with no through traffic. Numerous walk out sites available on this lot, with a south backyard exposure.

REALTOR Referral



REALTOR®

Mobile: 403-244-5646

Email: info@bigjohn.ca

Website: <https://www.real-estate-homes.ca/>

Courtesy Of: RE/MAX Real Estate (Mountain View)



[Big John Peterson](#)
RE/MAX Realty Professionals
info@bigjohn.ca
P: 403-244-5646
M: 403-244-5646