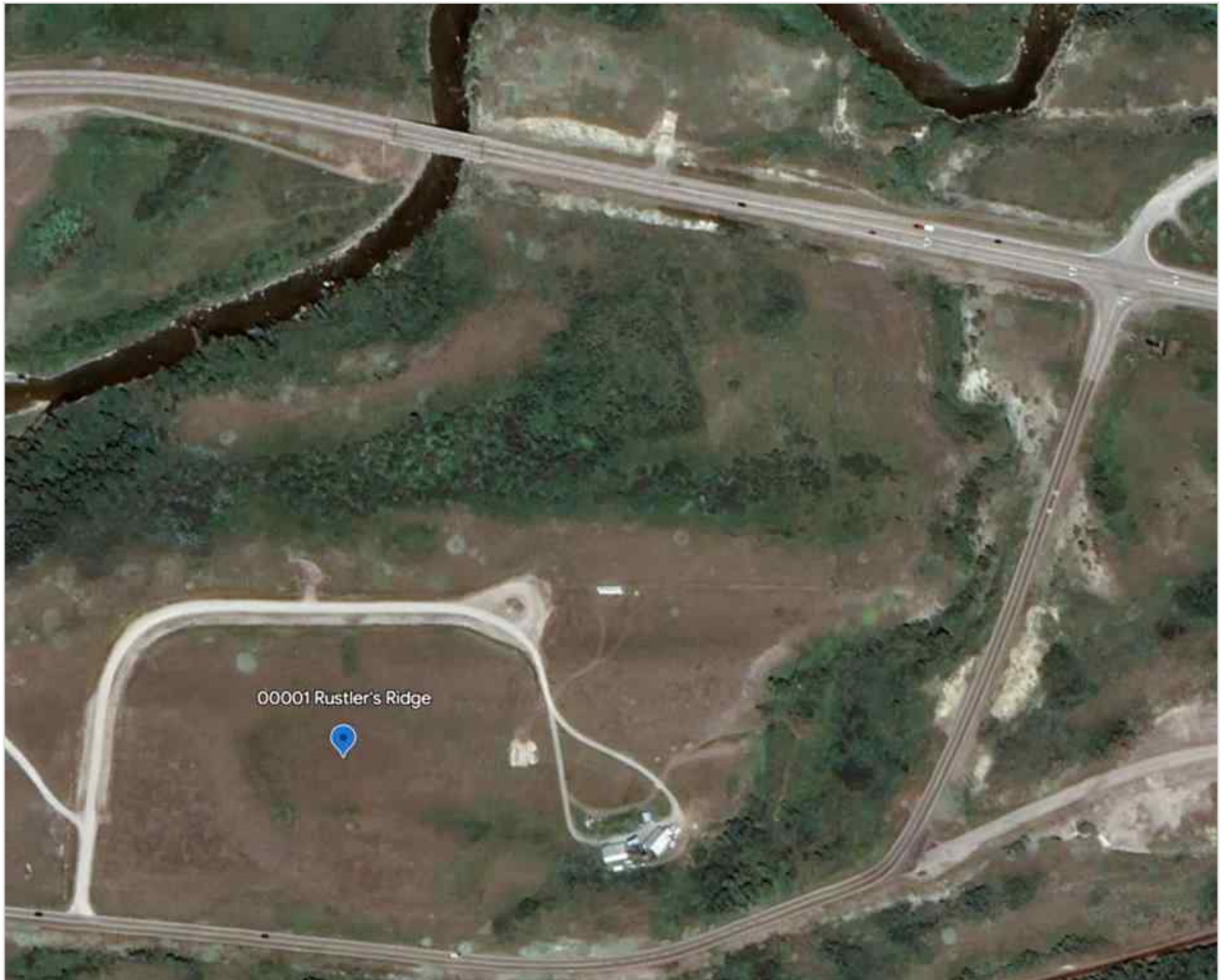




1 Rustler's Ridge , Rural Pincher Creek No. 9, M.D. of, Alberta - \$315,000



Main Photo

Property Description

If you've been searching for the perfect piece of land, this 8.8-acre property in Rustler's Ridge stands out from the rest. Zoned for residential use, with a well already drilled and electricity available right at the lot line, it offers an ideal setting to build your dream home or a cozy cabin retreat. Unlike many parcels in the area, this lot boasts direct, year-round walking access to the Crowsnest River, thanks to a registered easement—giving you the exclusive convenience of world-class fishing just steps from your door. Enjoy breathtaking panoramic views in every direction, with easy access to skiing, hiking, biking, and golfing, as



well as the natural beauty of Lundbreck Falls just to the west. Don't miss your chance to own this slice of paradise. Call your favourite REALTOR® today for more information.

REALTOR Referral



REALTOR®

Mobile: N/A

Email: N/A

Website: <https://www.real-estate-homes.ca/>

Courtesy Of: Grassroots Realty Group

