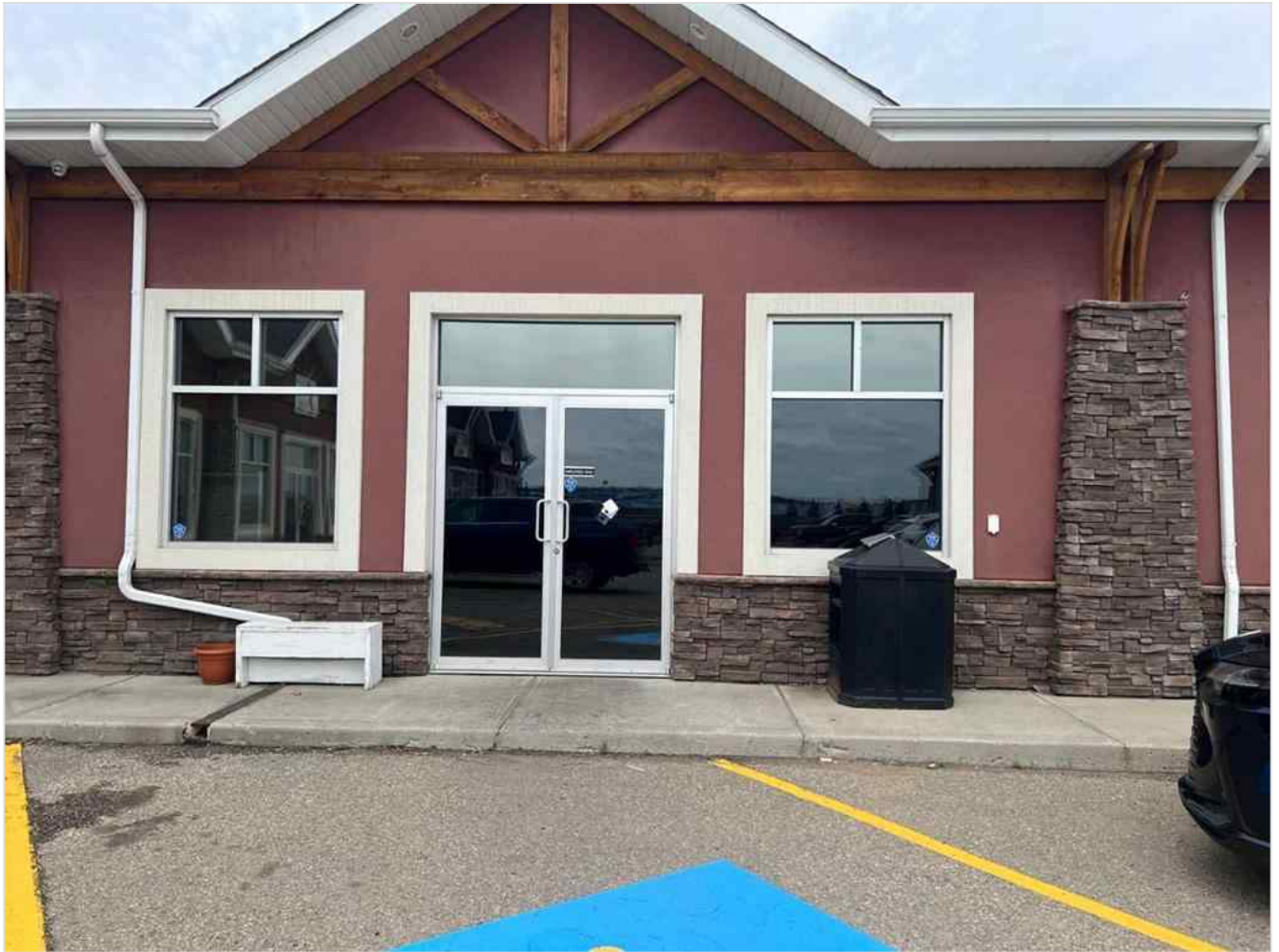




360, 49 Hinshaw Drive , Sylvan Lake, Alberta - \$20



Main Photo

Property Description

Discover 1,500 sq. ft. of versatile commercial space situated at the high-traffic intersection of Highway 20 and Herder Drive. This sought-after location offers exceptional visibility and easy access—ideal for a wide range of business ventures. Act quickly to secure your spot .

REALTOR Referral



P:



REALTOR®

Mobile: N/A

Email: N/A

Website: <https://www.real-estate-homes.ca/>

Courtesy Of: Royal LePage Network Realty Corp.



P: