

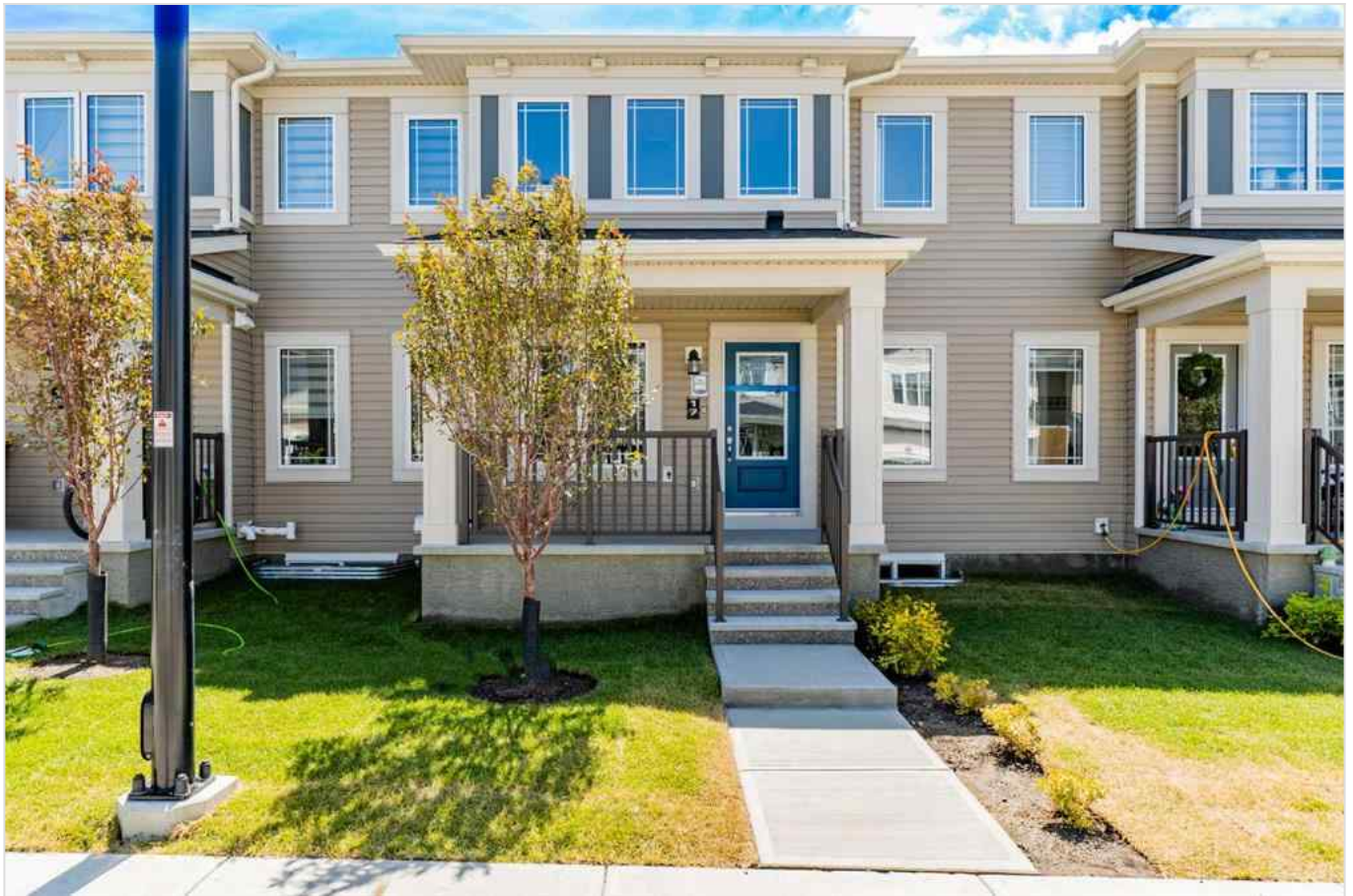


Receive email alerts based on your search criteria.

Create my alert



## 17 Southwinds Link SW, Airdrie, Alberta - \$469,000



Main Photo

### Property Description

BRAND NEW | NO CONDO FEE | 3 BEDROOMS | 2.5 BATHROOMS | DOUBLE ATTACHED GARAGE | Welcome to this NEW beautifully designed 2-storey NO CONDO FEE townhome in the sought-after community of SOUTHWINDS in AIRDRIE! Offering a front porch, 3 spacious bedrooms, 2.5 bathrooms, Triple Glazed Windows, Wireless light controls and a double attached garage with unfinished basement, this home is perfect for families and professionals alike. Step inside to a bright, open-concept main floor featuring stylish LVP flooring throughout. The modern kitchen is equipped with quartz countertops, upgraded stainless steel appliances, and a generous dining area, perfect for entertaining. A cozy living room and convenient half bath complete the space. Upstairs, you'll find a generous sized primary bedroom with a 4-



[Sean Gillis](#)

RE/MAX Grande Prairie

[sean@seangillis.ca](mailto:sean@seangillis.ca)

P:

M: 780.897.3520

piece ensuite and a walk in closet, two additional well-sized bedrooms, a second full bathroom, and a large balcony—ideal for relaxing with your morning coffee. The unfinished basement comes with plumbing rough ins for potential future development. This home also comes with a 200-amp panel, EV charging rough in, and solar panel rough-in. Nestled in a family-friendly community, this home is short distance from shopping, ponds and Highway. Enjoy the charming front porch, upper-floor laundry, and the convenience of NO condo fees! Don't miss out—schedule your showing today! (Some of the property images are virtually staged)

## REALTOR Referral

---



REALTOR®

**Mobile:** 780.897.3520

**Email:** [sean@seangillis.ca](mailto:sean@seangillis.ca)

**Website:** <https://www.real-estate-homes.ca/>

*Courtesy Of: MaxWell Gold*



[Sean Gillis](#)

RE/MAX Grande Prairie

[sean@seangillis.ca](mailto:sean@seangillis.ca)

P:

M: 780.897.3520