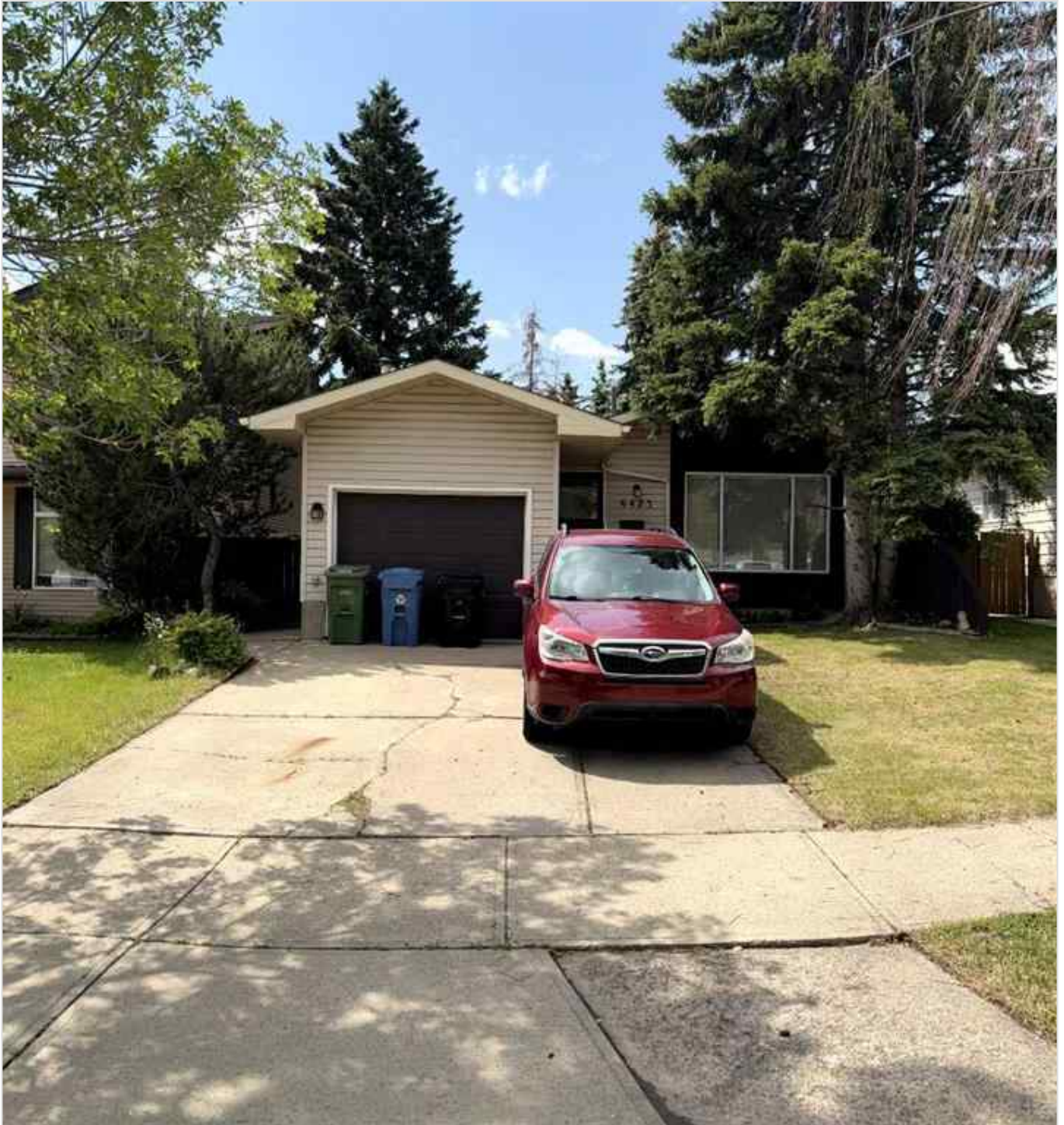




**6423 28 Avenue NE, Calgary, Alberta - \$456,000**



Main Photo

Photos  
Coming  
Soon



P:

## Property Description

---

ATTENTION HANDYMEN & FLIPPERS! SUNNY SOUTH-FACING BACKYARD | STEPS TO THE PARK | LARGE LOT  
Welcome to the highly sought-after community of Pineridge! This spacious 4-level split offers over 2,000 SQFT of developed living space, featuring 2 bedrooms, 1.5 bathrooms, and endless potential for customization.

The main level offers a functional layout with an open-concept kitchen, breakfast bar, and direct access to the east-facing deck from the dining room—perfect for enjoying your morning coffee in the sun.

Upstairs, you'll find two generous bedrooms, including a larger primary suite with a walk-in closet, and a full bathroom. The lower levels feature a massive family room and rec room with large, bright windows that flood the space with natural sunlight—ideal for entertaining or future development. Additional features include, Heated single attached garage, Gas BBQ hookup and Newer furnace & on-demand hot water system. This is a perfect opportunity for investors, renovators, or anyone looking to build equity in a fantastic location. Don't miss out—schedule your showing today!

## REALTOR Referral

---



REALTOR®

**Mobile:** N/A

**Email:** N/A

**Website:** <https://www.real-estate-homes.ca/>

*Courtesy Of: Royal LePage Blue Sky*

