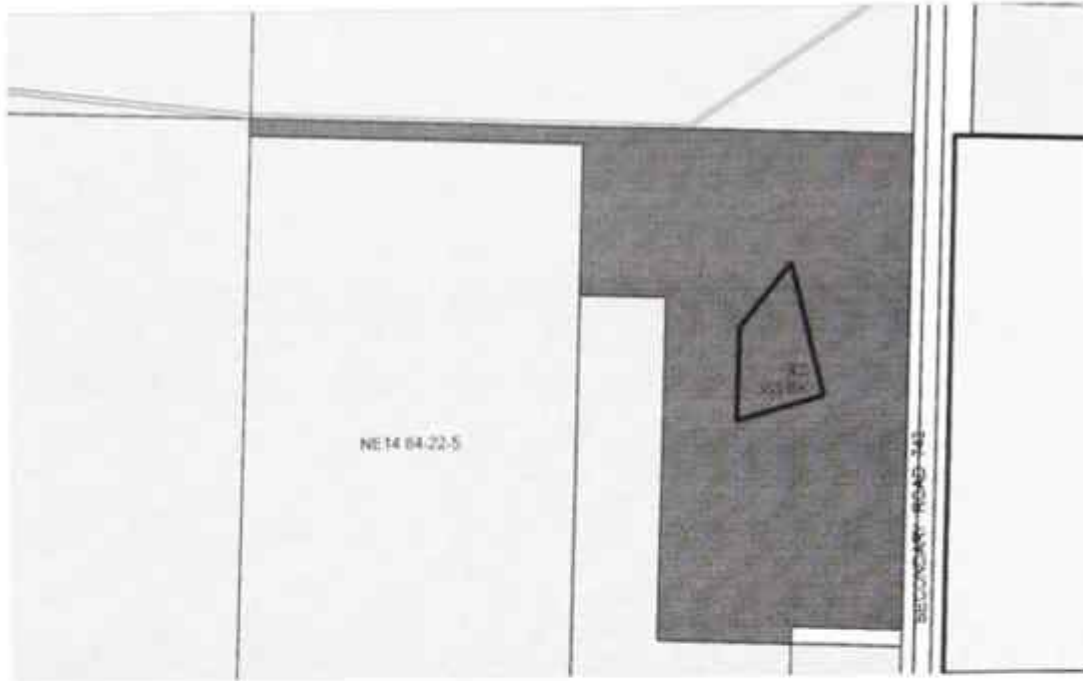




Hwy 743 , Rural Northern Lights, County of, Alberta - \$225,000



Property Description

Zoned M 1 General Industrial. 2 1/2 miles or 5 km North of Peace River. There is 52.6 acre Industrial lots here. Located on Hwy 743 with highway access - between Peace River and Mercer Mill you would have great access to all the amenities needed - Very low taxes currently and one of the larger parcels available in the area

REALTOR Referral



REALTOR®

Mobile: N/A

Email: N/A

Website: <https://www.real-estate-homes.ca/>

Courtesy Of: Century 21 Town and Country Realty