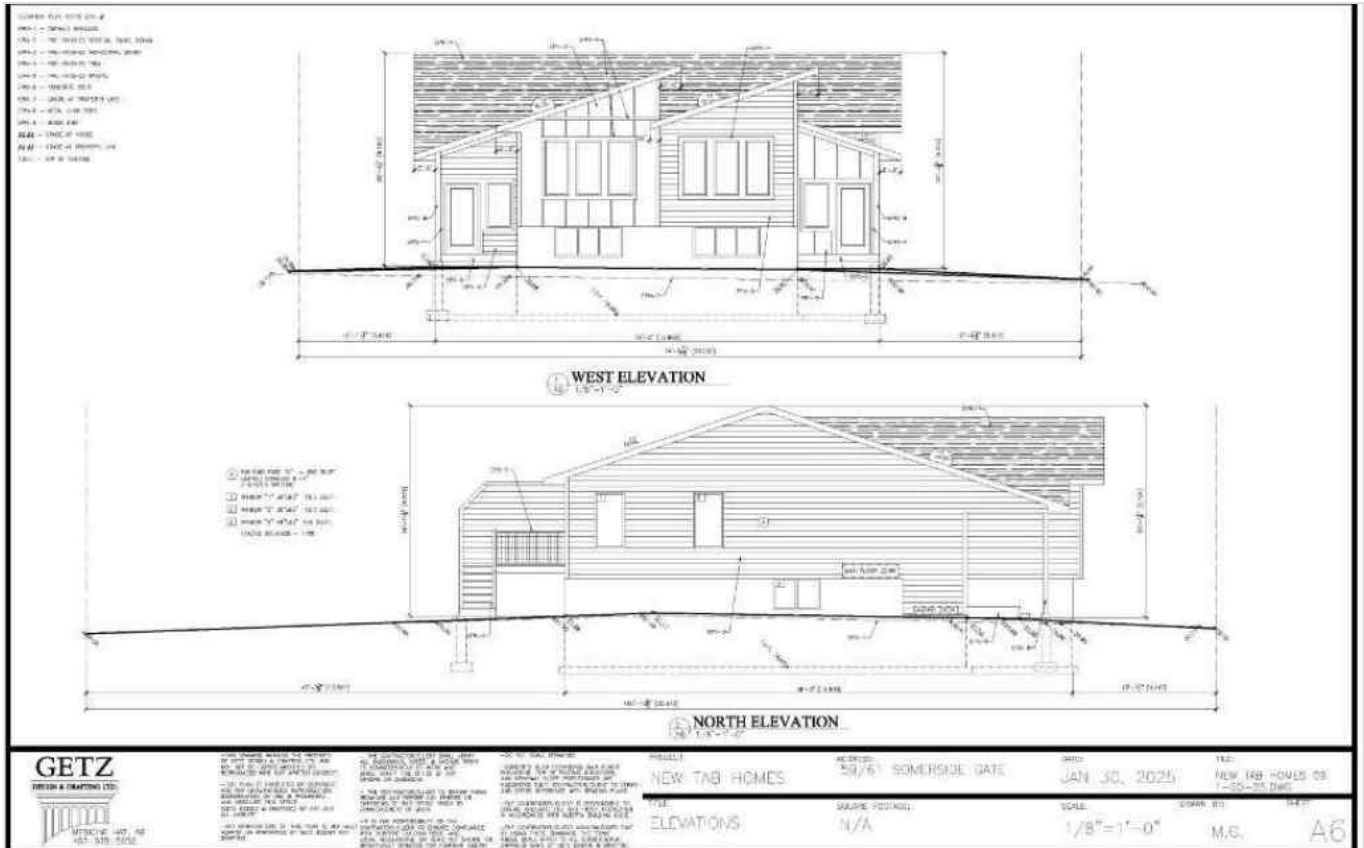




59 Somerside Gate SE, Medicine Hat, Alberta - \$399,900



Main Photo

Property Description

Welcome to this stunning brand-new home by New Tab Homes Ltd., scheduled for completion in mid-October 2025! This half duplex offers a bright, open-concept layout with 3 bedrooms and 2.5 bathrooms, ideal for modern living. The main floor features a functional kitchen with a central island and walk-in pantry, seamlessly connecting to the dining area and cozy living room. A spacious deck extends your living space outdoors, with a backyard ready for your personal touch. Also on the main floor is a convenient 2-piece bath and the primary suite, complete with a walk-in closet and 4-piece ensuite. The basement adds two more bedrooms, a full 4-piece bathroom, a laundry room & spacious family room. Ideally situated near schools, walking paths, and local amenities. There's still time to customize finishes to your personal style! RMS square footage is based on builder plans and will be updated upon completion.

REALTOR Referral





REALTOR®

Mobile: N/A

Email: N/A

Website: <https://www.real-estate-homes.ca/>

Courtesy Of: ROYAL LEPAGE COMMUNITY REALTY



P: