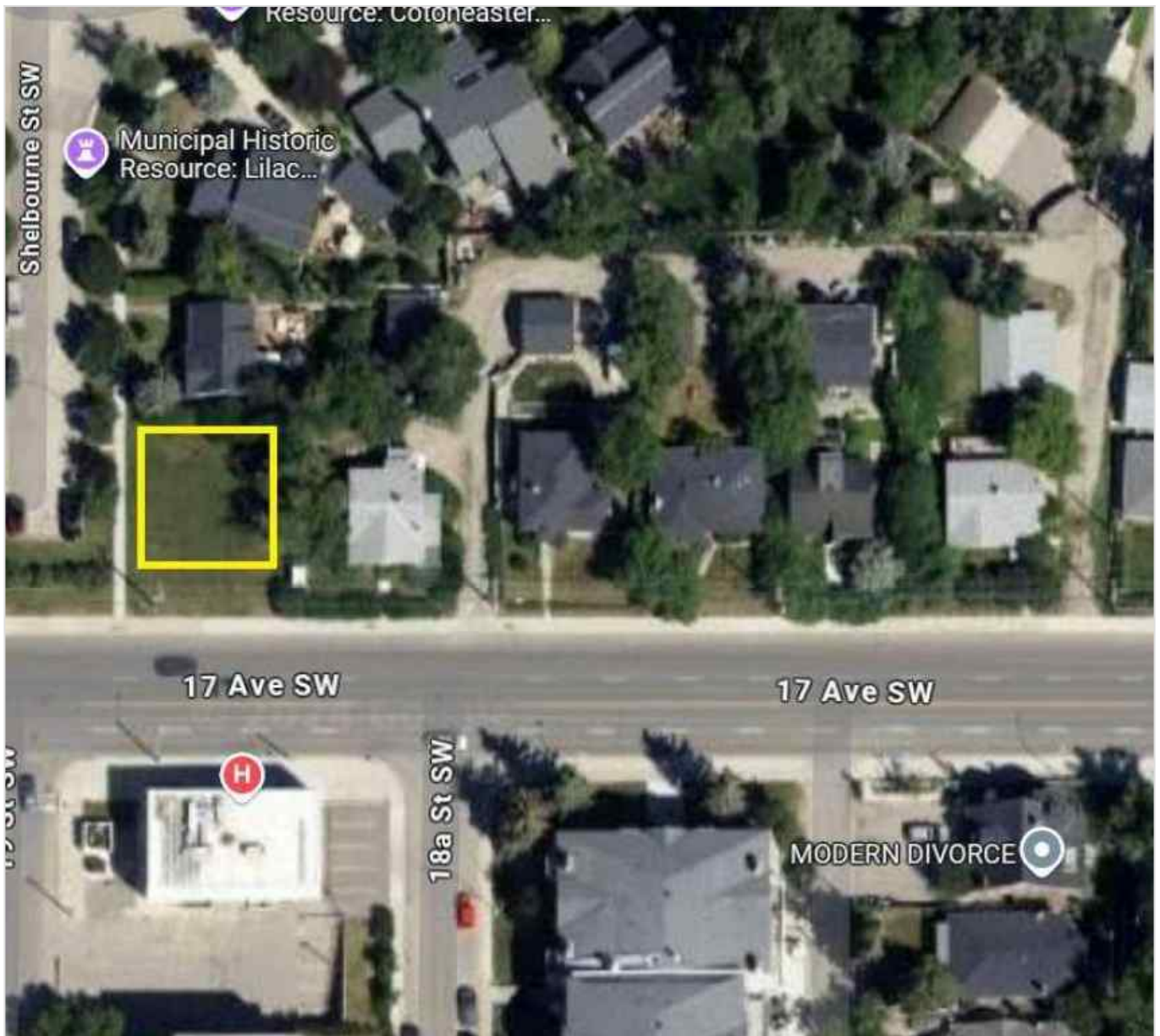




## 1620 Shelbourne Street SW, Calgary, Alberta - \$500,000



Main Photo

### Property Description

"ATTENTION DEVELOPERS & BUILDERS!! Prime corner lot in the highly sought-after inner-city community of Scarboro! This spacious lot, zoned RCG, is ideal for an infill project, with no demolition costs and immediate possession available. Measuring approximately 19.8 x 21.3 meters (corner cut), this location



offers a rare opportunity to build a new home or multi-family unit just minutes from downtown Calgary. Enjoy the convenience of nearby amenities including top-rated schools, parks, shopping, dining, and excellent transit access. Don't miss out—motivated sellers make this upscale neighborhood your next project site!"

REALTOR Referral

  
REALTOR®  
  
**Mobile:** N/A  
**Email:** N/A  
**Website:** <https://www.real-estate-homes.ca/>

Courtesy Of: CIR Realty