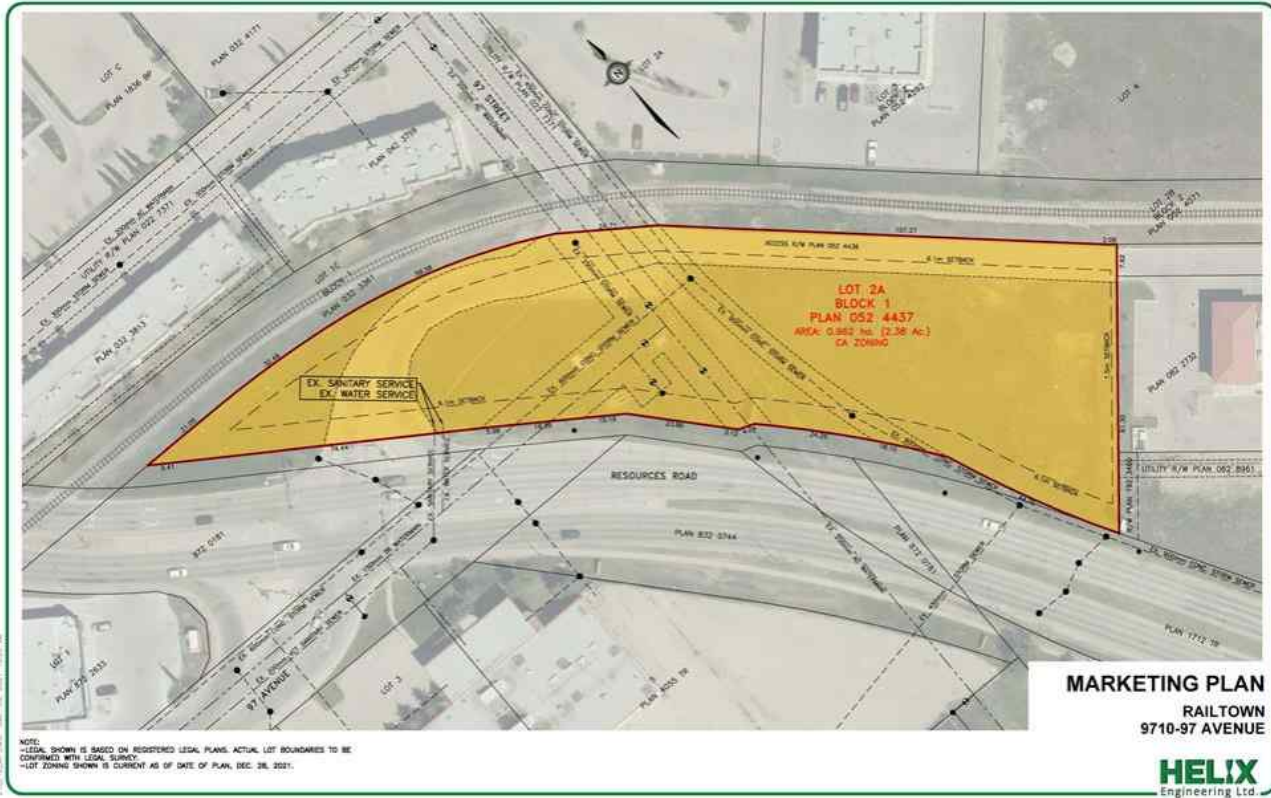




9710 97 Avenue , Grande Prairie, Alberta - \$149,000



Main Photo

Property Description

2.38 acres zoned Commercial use, conveniently located in the heart of the City, in the very popular Junction Point Village. Close to the Royal Bank and just off Resources Road, these lots are the perfect location for Commercial / Retail condos or a great area to start up or re-locate your business! Can build to suit!!!

REALTOR Referral



REALTOR®

Mobile: N/A

Email: N/A

Website: <https://www.real-estate-homes.ca/>

Courtesy Of: RE/MAX Grande Prairie



P: