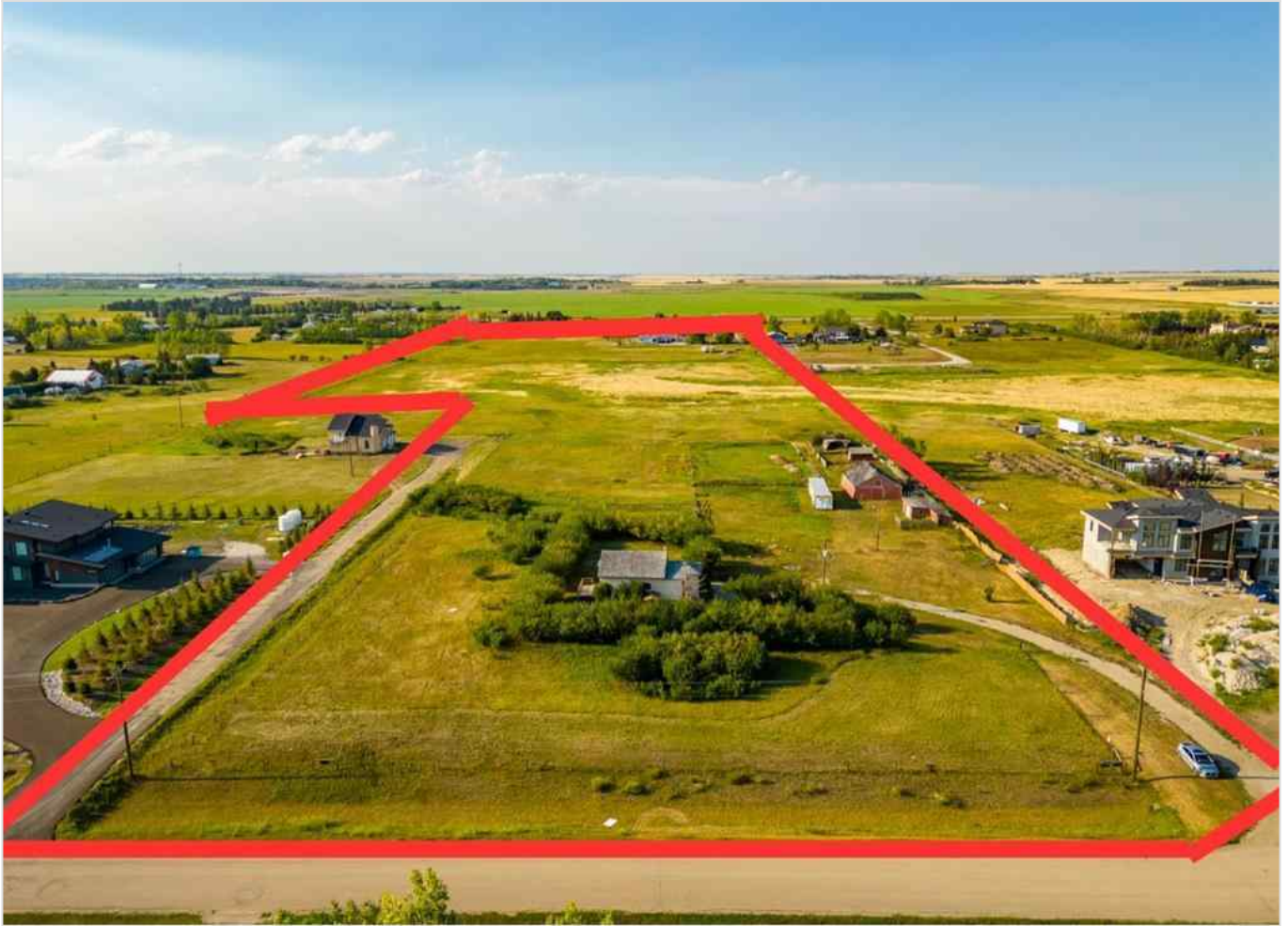




280156 Township Road 241A , Chestermere, Alberta - \$1,875,000



Main Photo

Property Description

East Chestermere is experiencing significant growth, making it an excellent opportunity for investors and developers. Located just a few kilometers from Chestermere Lake, this 15.5-acre parcel offers significant potential for subdivision into one-acre lots or high-density residential development. As the fastest-growing community in Alberta, Chestermere is a highly desirable location, just 20 minutes from Calgary. The flat land provides a strong foundation for building a new community. With the City's Municipal Development Plan currently being updated, now is the perfect time to invest. Primarily land value, but there is a house in disrepair, water well and septic all sold as is. See supplements for the UMP plan.



REALTOR Referral


REALTOR®

Mobile: N/A
Email: N/A
Website: <https://www.real-estate-homes.ca/>

Courtesy Of: Coldwell Banker Mountain Central

