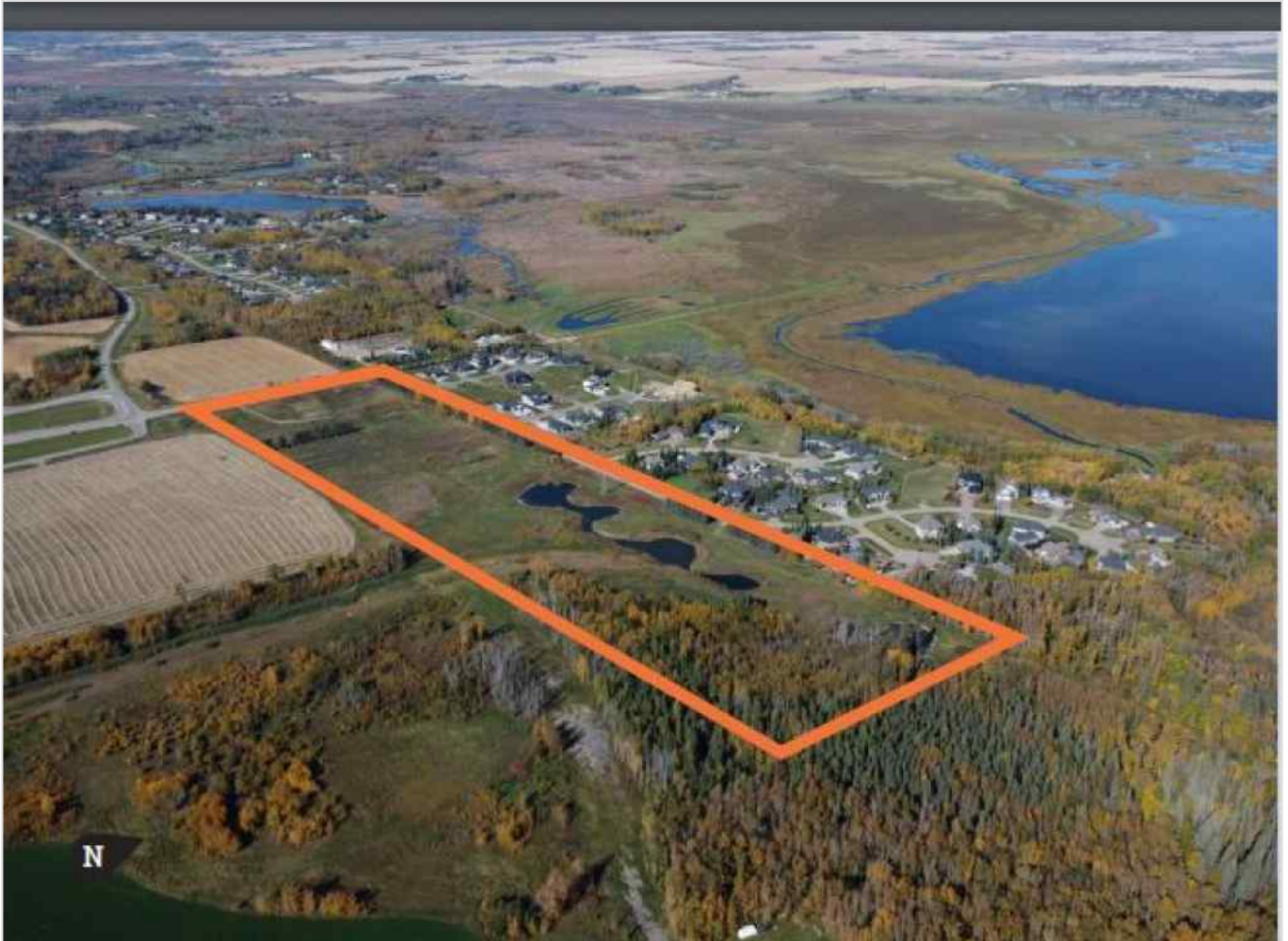




53213 Range Road 263 , Rural Parkland County, Alberta - \$2,909,250



Main Photo

Property Description

Click brochure link for more information** Approximately 38.79 acres in Lake Ridge Estates, a rural residential community along Big Lake

Immediately developable with services available for tie in along Lake Ridge Drive, adjacent to the property

Located in Parkland County, one of Alberta's largest and most densely populated municipalities

Convenient access to Edmonton, major transportation centres and employment areas via Highway 60, Highway 16 and Anthony Henday Drive

REALTOR Referral





REALTOR®

Mobile: N/A

Email: N/A

Website: <https://www.real-estate-homes.ca/>

Courtesy Of: Honestdoor Inc.



P: