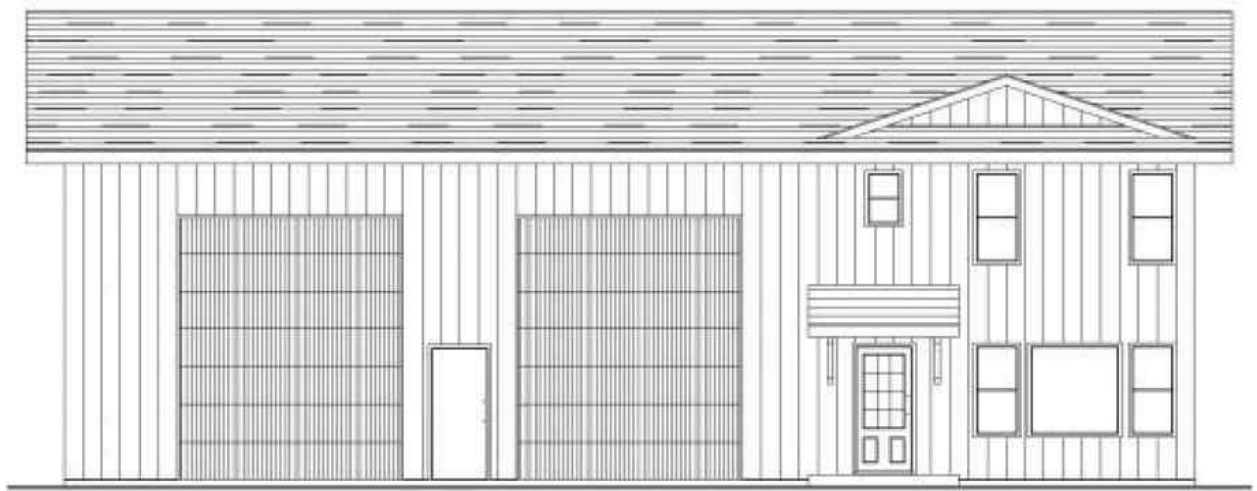




## 105 Pheasant Road , Rosemary, Alberta - \$25,000



Main Photo

### Property Description

Look to the future, build a "Shouse" in Rosemary! A newly developed General Industrial subdivision on Pheasant Road is promoting a discretionary development of a "Shouse" or also known as a Live/Work development. The Village of Rosemary is offering a promotional price of \$25,000 until December 31, 2025, with commencement of construction within 12 months of a signed purchase agreement date. The lots are a generous size of 125'x 146'. All utilities are available and easy to access. The community offers a K-12 school, Recreation/Arena Facility, Updated parks, convenience store, post office, bakery and a local butcher shop. A little hidden gem of a campground as well. With a shower/bathroom building, hook ups

and large parking pads. There is also a \$2000 Tax allowance that will be put towards the Municipal Taxes.

## REALTOR Referral

---



REALTOR®

**Mobile:** N/A

**Email:** N/A

**Website:** <https://www.real-estate-homes.ca/>

*Courtesy Of: Century 21 Foothills Real Estate*



P: