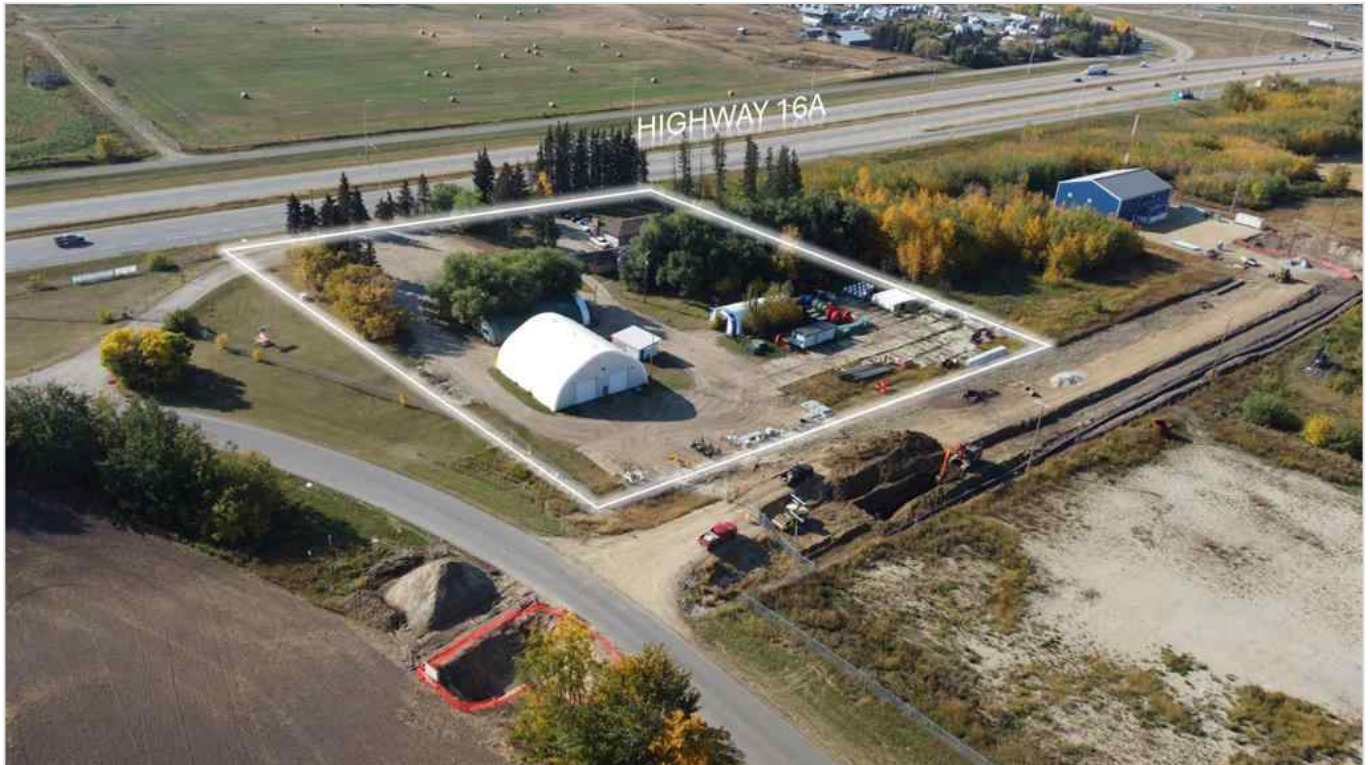




10302 255 Street , Rural Parkland County, Alberta - \$1,288,000



Main Photo

Property Description

Industrial land in Acheson with direct exposure to Highway 16A. Excellent access to three key transportation corridors - Highway 16A, Highway 16, and Highway 60. Improvements and realignment of Bevington Road & Pinchbeck Road are underway with completion slated for December 2024. Watermain extension to this area planned to commence Winter 2024/2025. Deferred Service Agreement in place (wastewater). Business Industrial Zoning allows for a variety of uses

REALTOR Referral





REALTOR®

Mobile: N/A

Email: N/A

Website: <https://www.real-estate-homes.ca/>

Courtesy Of: CDN Global Advisors Ltd.



P: