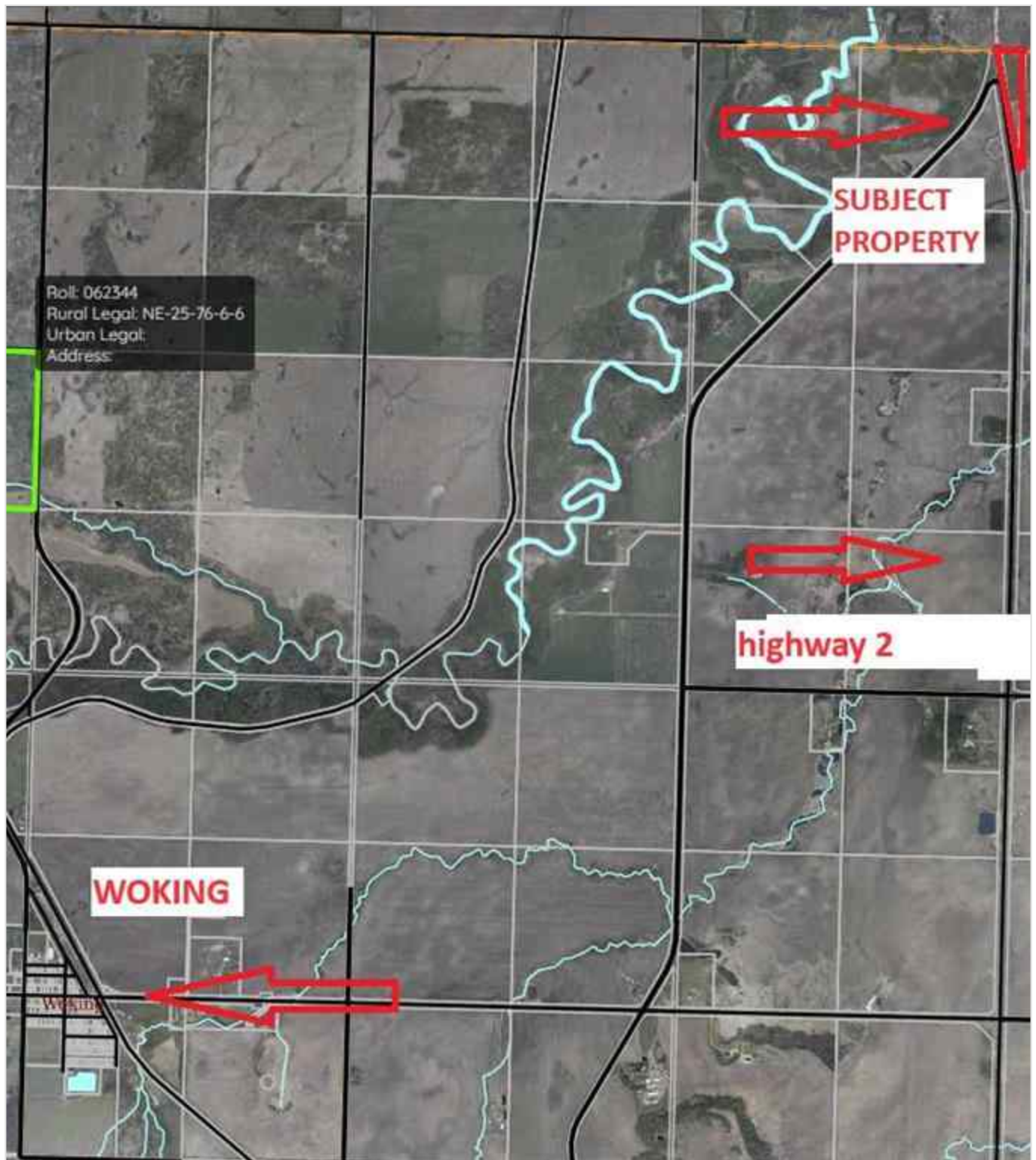




**NE-33-76-5-W6 HWY 2 , Rural Saddle Hills County, Alberta - \$79,900**



## Property Description

---

Great little 7 acre parcel with great exposure to highway 2. This property has an AG zoning attached to it. If you are looking for the zoning details please reach out to your favorite real estate agent to get a copy (can be found in supplements). Could be a nice spot for an acreage or potentially a small business. Vacant land, lightly treed.

## REALTOR Referral

---



REALTOR®

**Mobile:** N/A

**Email:** N/A

**Website:** <https://www.real-estate-homes.ca/>

*Courtesy Of: Grassroots Realty Group Ltd.*