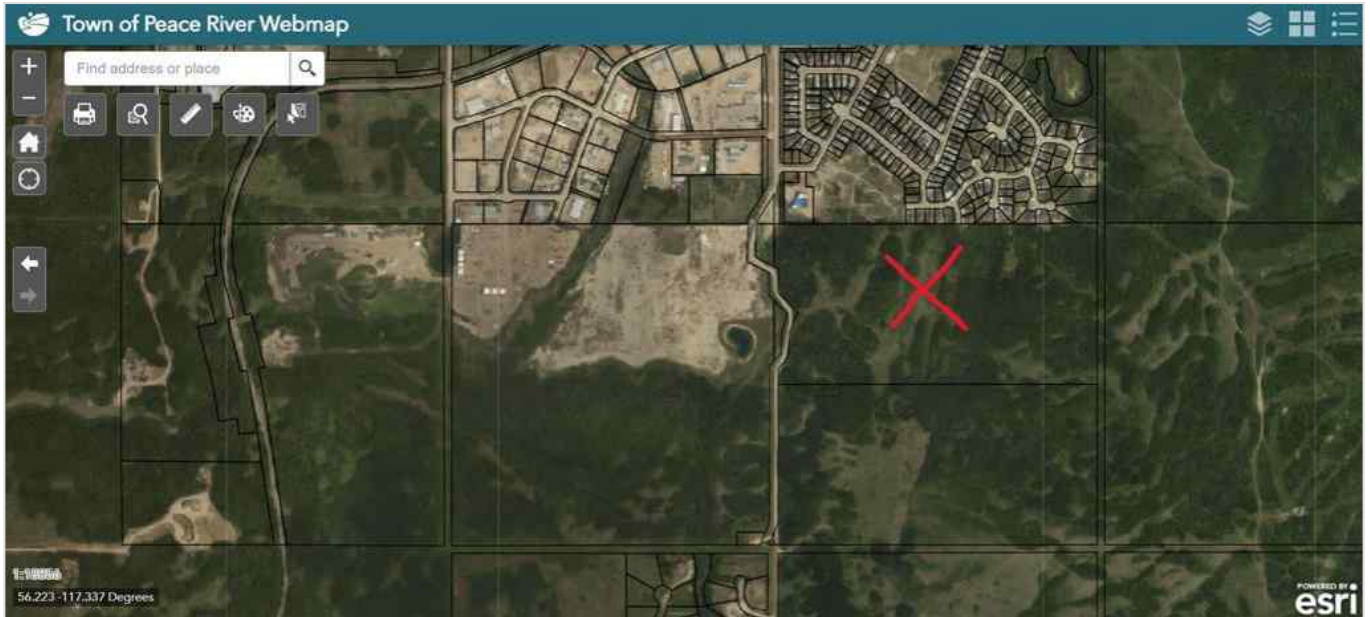




10101 68 Street , Peace River, Alberta - \$1,200,000



Main Photo

Property Description

Located directly adjacent to Saddleback Ridge, this 78.72 acre parcel of land is destined to become part of any future development in the Town of Peace River. Develop this into a new residential subdivision but take advantage of the close proximity to all of the retail locations already located on the West Hill. Future commercial development is also likely to continue on the West Hill making this a great parcel of land to buy and develop. Call today to find out more.

REALTOR Referral



REALTOR®

Mobile: N/A

Email: N/A

Website: <https://www.real-estate-homes.ca/>



P:

Courtesy Of: RE/MAX Northern Realty



P: