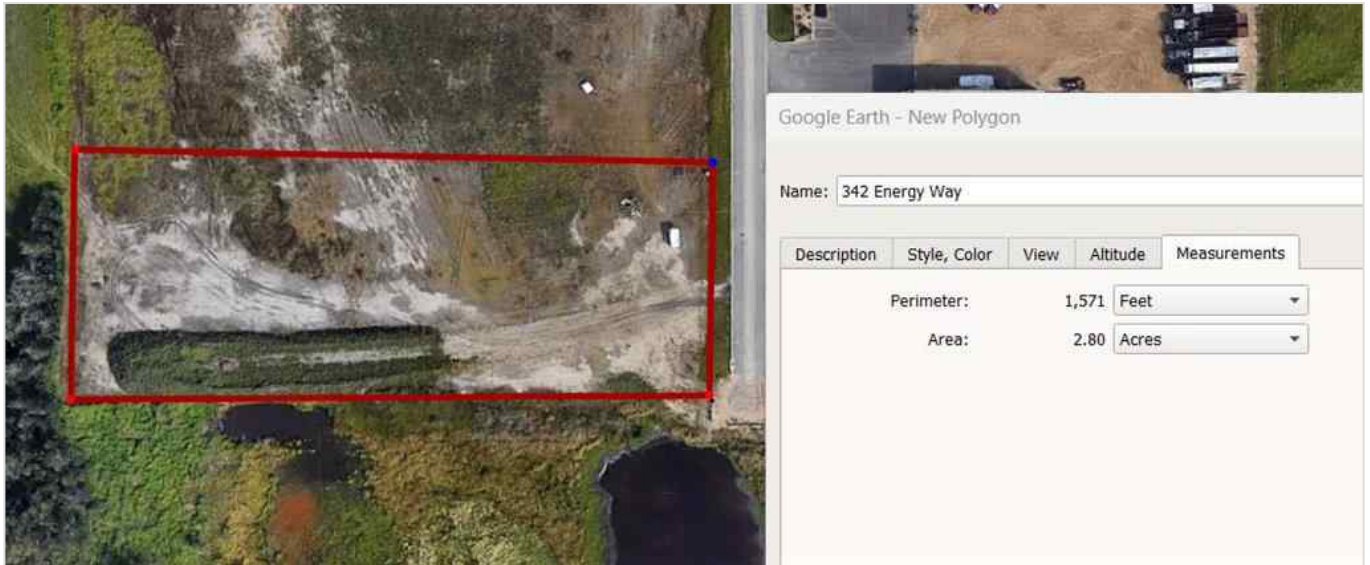




342 Energy Way , Rural Red Deer County, Alberta - \$560,000



Main Photo

Property Description

This GREAT parcel has no limit to the possibilities. 2.8 acres of vacant ground that is ready for a new business or an expanding business. Minutes from Highway 2 and easy access to Red Deer south end businesses in minutes!! The Seller is willing to do a Build To Suit or even vendor financing on vendor approval.

REALTOR Referral



REALTOR®

Mobile: N/A

Email: N/A

Website: <https://www.real-estate-homes.ca/>

Courtesy Of: Royal LePage Lifestyles Realty



P: