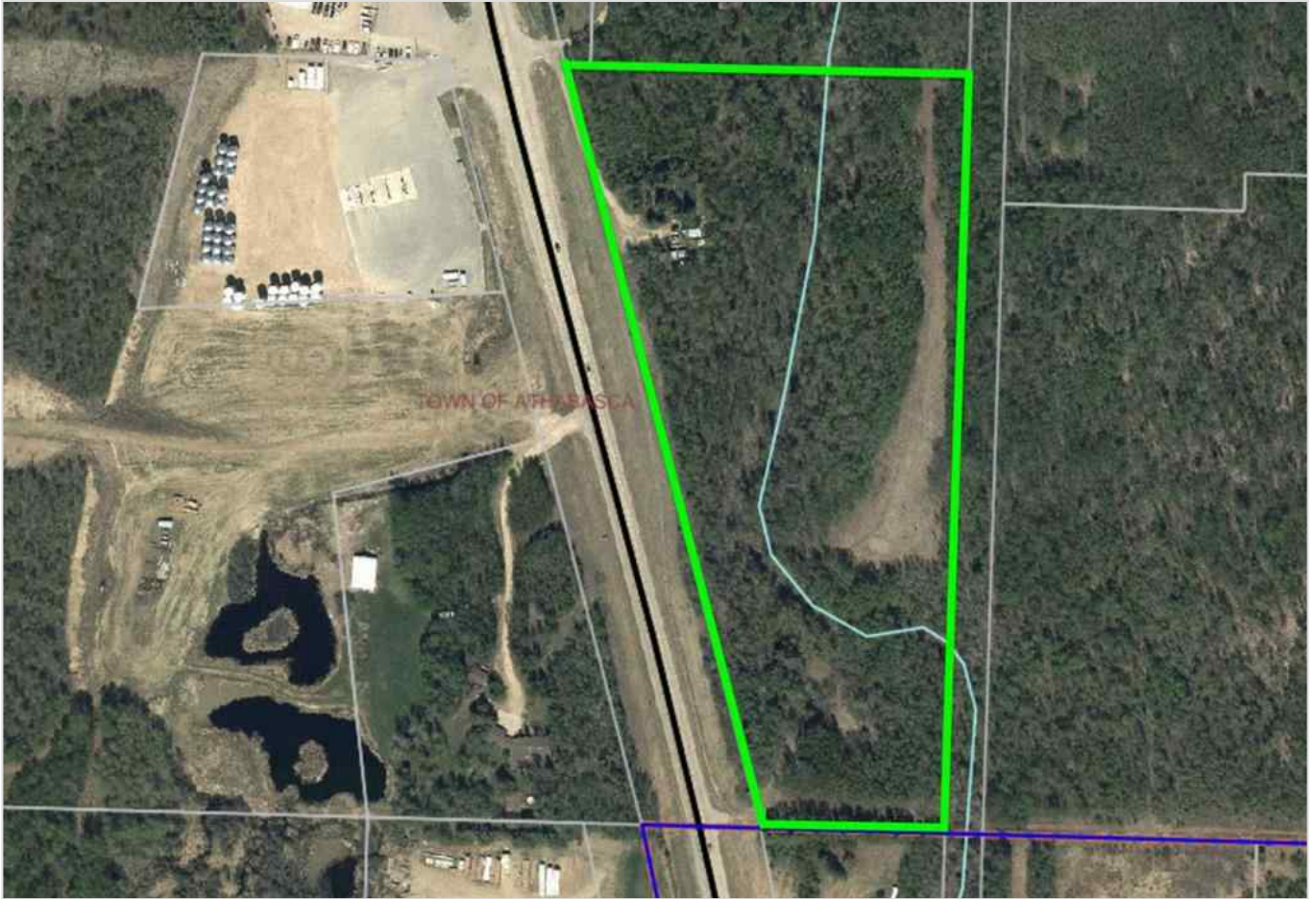




## Part of NE-8-66-22-W4 , Athabasca, Alberta - \$380,000



Main Photo

### Property Description

15.32 acres within Town limits! Current use is residential, with rezoning would be an excellent location for commercial/industrial use with Highway 2 exposure. Home was built in 1973 with 4 bedrooms and 2 bathrooms. Walk-out basement has a large hobby room, bedroom and unfinished flex space open to your imagination. Acreage is mostly heavily treed and hilly with a private clearing stretching along the east side. Second approach off the highway at the south west end. This property offers unlimited possibilities.

### REALTOR Referral





REALTOR®

**Mobile:** N/A

**Email:** N/A

**Website:** <https://www.real-estate-homes.ca/>

*Courtesy Of: 3% REALTY PROGRESS*



P: