

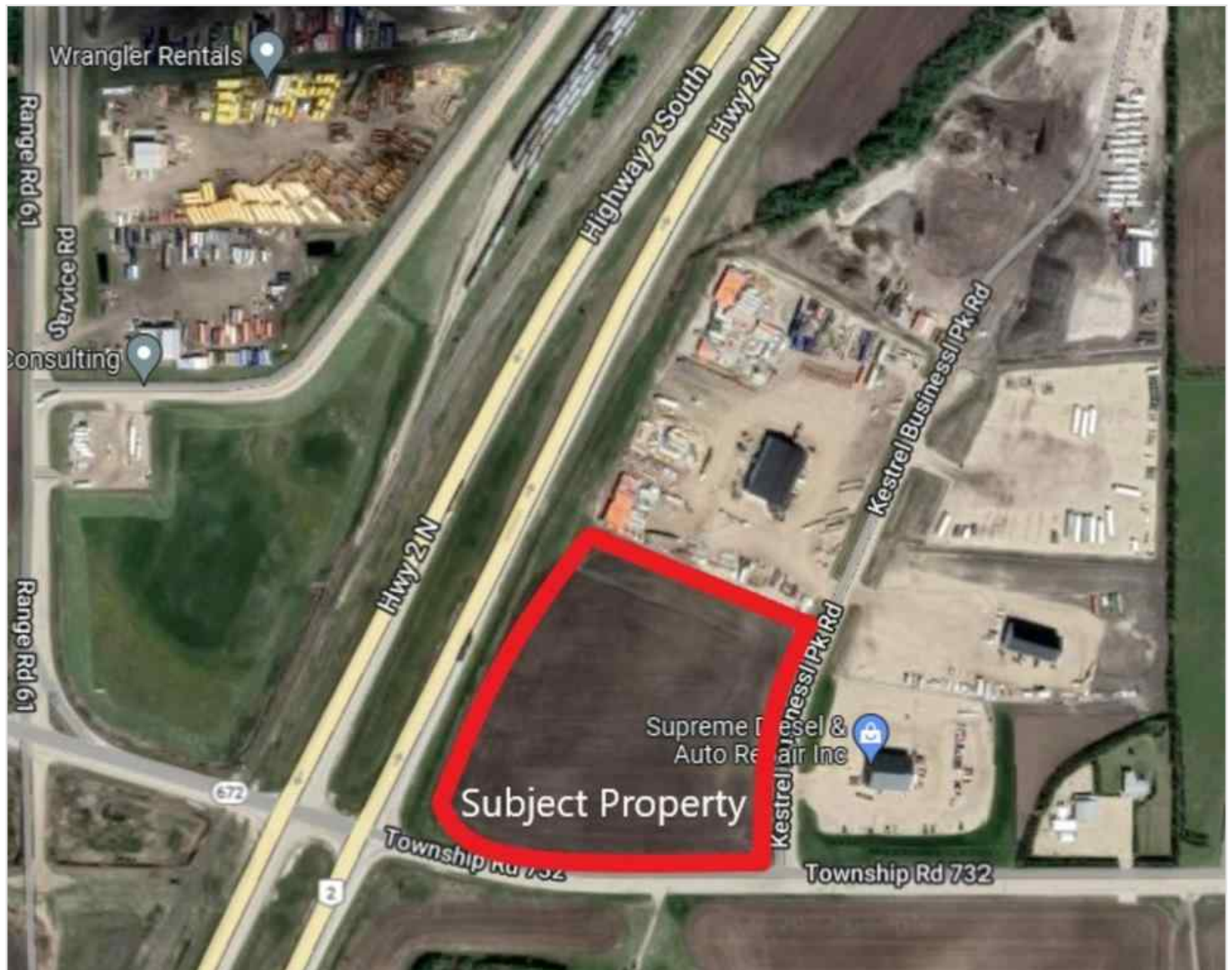


Receive email alerts based on your search criteria.

Create my alert



**2, 60056 732 Township , Sexsmith, Alberta - \$1,850,000**



Main Photo

## Property Description

Incredible 10.01 acres of frontage onto Highway 2 and Emerson trail located in the Kestrel Business Park. This Industrial lot zoned RM-4 (Highway Industrial) is well situated to provide quick access to both the Grande Prairie/Clairmont area and B.C. This is a bare land listing being offered at \$185,000 per acre. Call your Commercial REALTOR® today for more information.



[Cord Spero](#)

RE/MAX Grande Prairie

[robert.steele@followupboss.me](mailto:robert.steele@followupboss.me)

P: 780-538-4747

M: 780-832-5880

## REALTOR Referral

---



REALTOR®

**Mobile:** 780-832-5880

**Email:** [robert.steele@followupboss.me](mailto:robert.steele@followupboss.me)

**Website:** <https://www.real-estate-homes.ca/>

*Courtesy Of: RE/MAX Grande Prairie*



[Cord Spero](#)

RE/MAX Grande Prairie

[robert.steele@followupboss.me](mailto:robert.steele@followupboss.me)

P: 780-538-4747

M: 780-832-5880