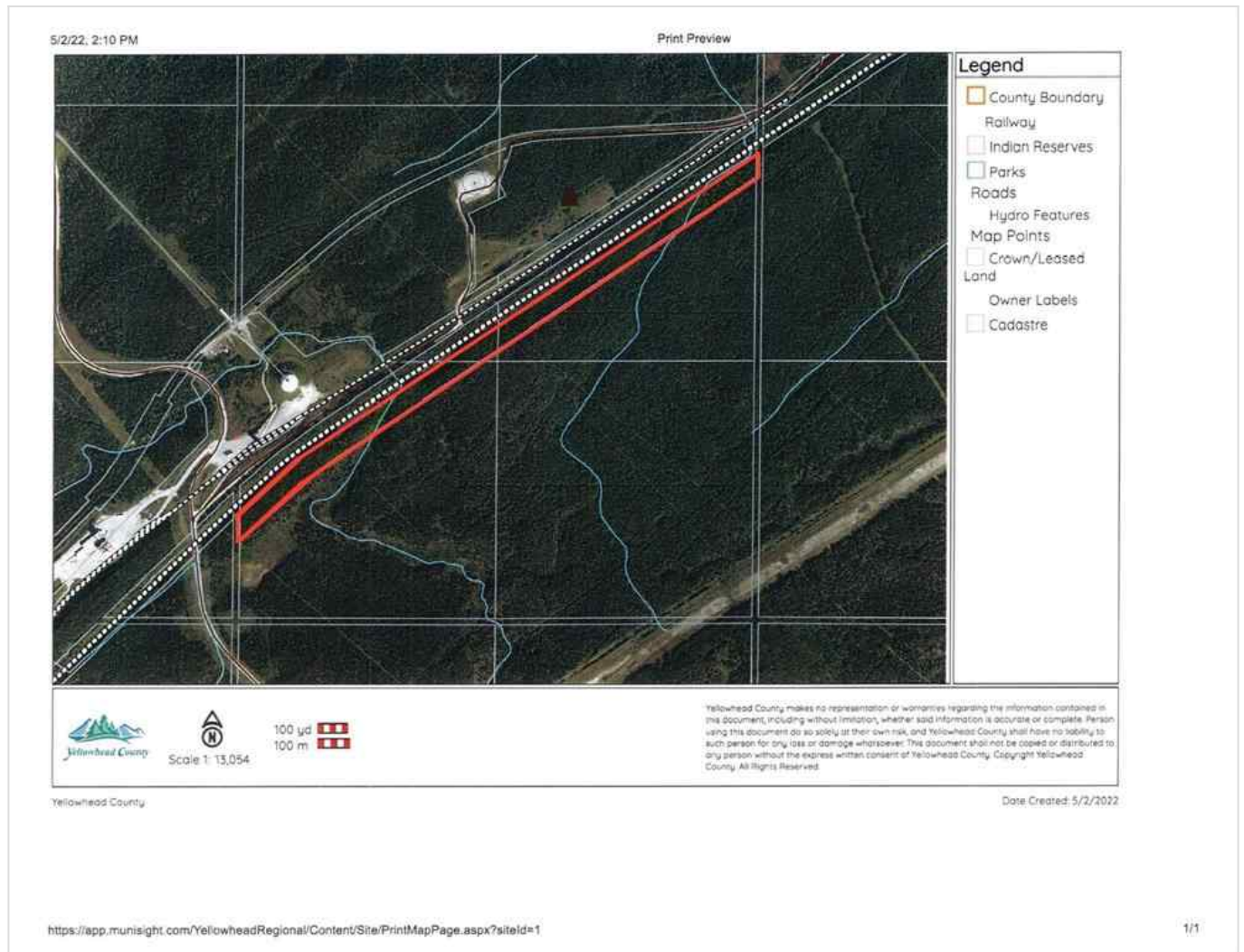




5-23-52-28 SW , Rural Yellowhead County, Alberta - \$149,900



Main Photo

Property Description

Recreational property for sale in Yellowhead County. The property runs along the south side of a CN rail line. As an added bonus, the property has a creek running across it. There is no public road access to this property. The property is approximately 61 meters (200 feet) wide by 2km long

REALTOR Referral

Photos
Coming
Soon



P:



REALTOR®

Mobile: N/A

Email: N/A

Website: <https://www.real-estate-homes.ca/>

Courtesy Of: RE/MAX 2000 REALTY



P: